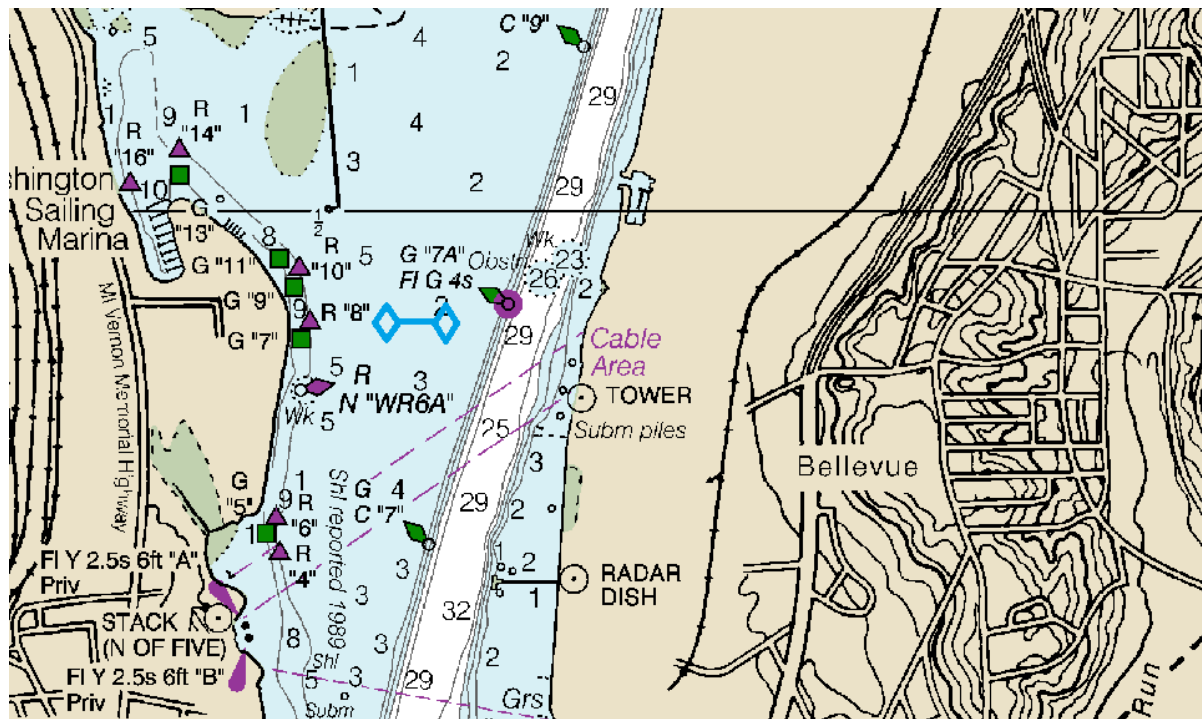


PRSA Long Distance Race Course Options

Note: course descriptions assume a southerly wind. Courses can be reversed in the event of a northerly wind. The RC will announce the course, start line position, and start direction (southerly start or northerly start) at the competitor's meeting.

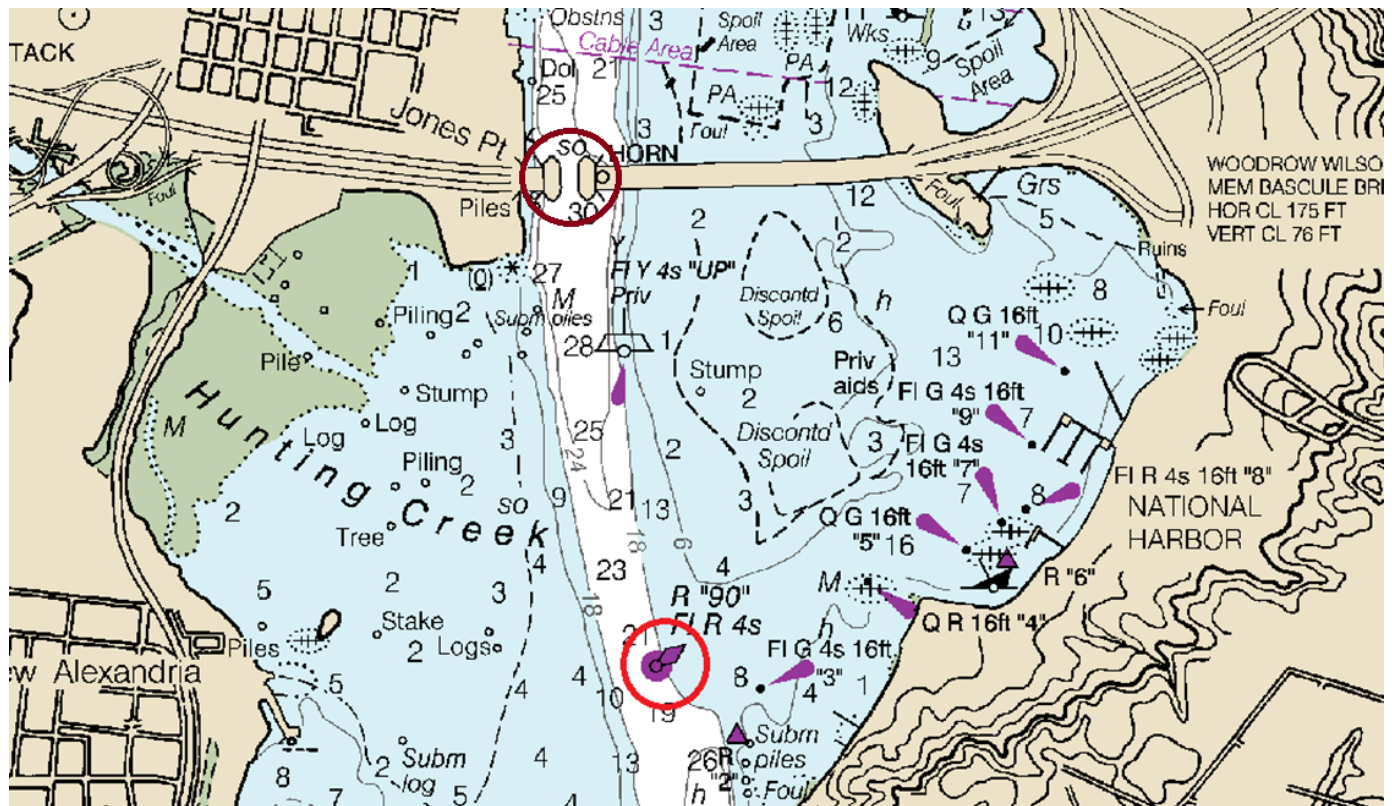
COURSE 1

Start/Finish between RC boat and start/finish pin in the middle of the river.

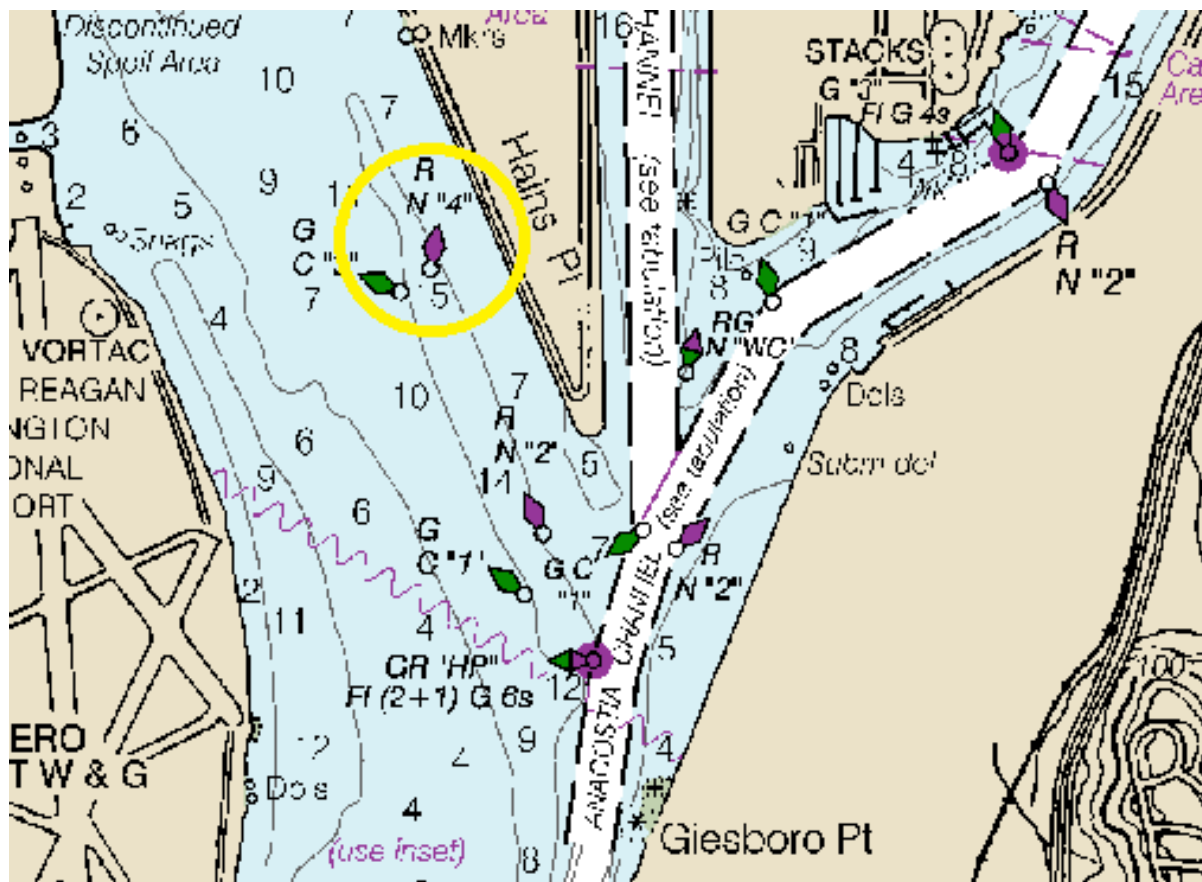


Note: must pass through brown circle (channel area under Wilson Bridge) in both directions.

Mark 1: "Red 90" (second red channel marker south of Wilson Bridge). Round to Port.



Mark 2: "N4" (second red channel marker north of Anacostia Branch split). Round to Port.



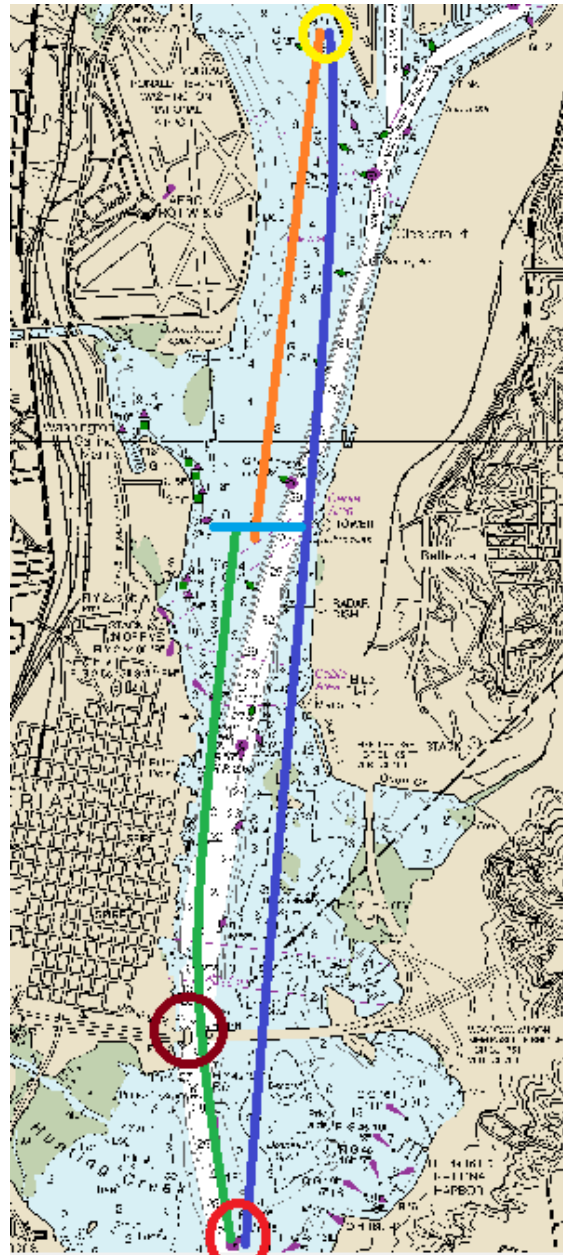
Course 1 Summary

First leg: Start to "R90" (Green on diagram below)

Second leg: "R90" to "N4" (Blue on diagram)

Third leg: "N4" to Finish Line (Orange on diagram)

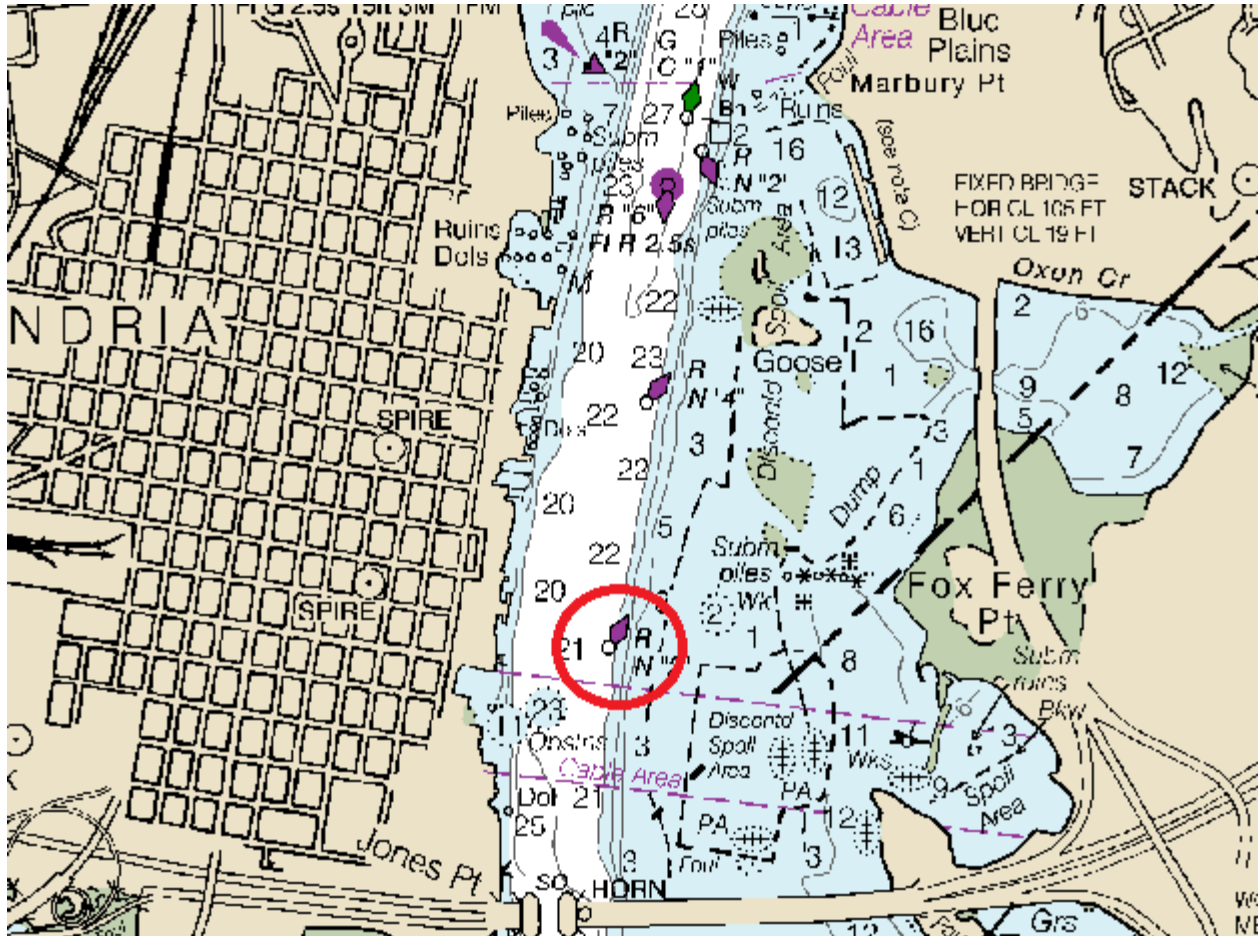
Total distance (minimum): ~15 nautical miles



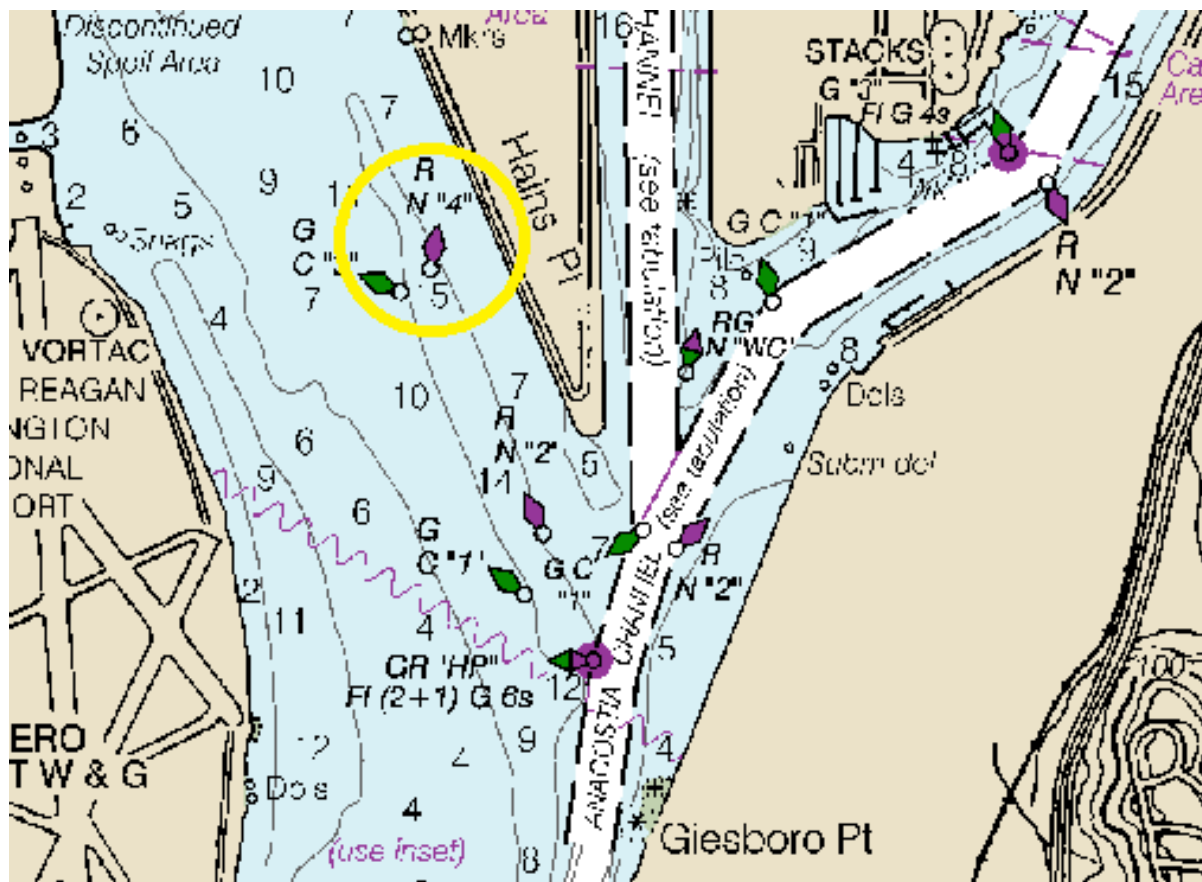
COURSE 2

Start/Finish between RC boat and start/finish pin in the middle of the river (same as Course 1).

Mark 1: "N2" (last red channel marker north of the Wilson Bridge). Round to Port.



Mark 2: "N4" (second red channel marker north of Anacostia Branch split). Round to Port.



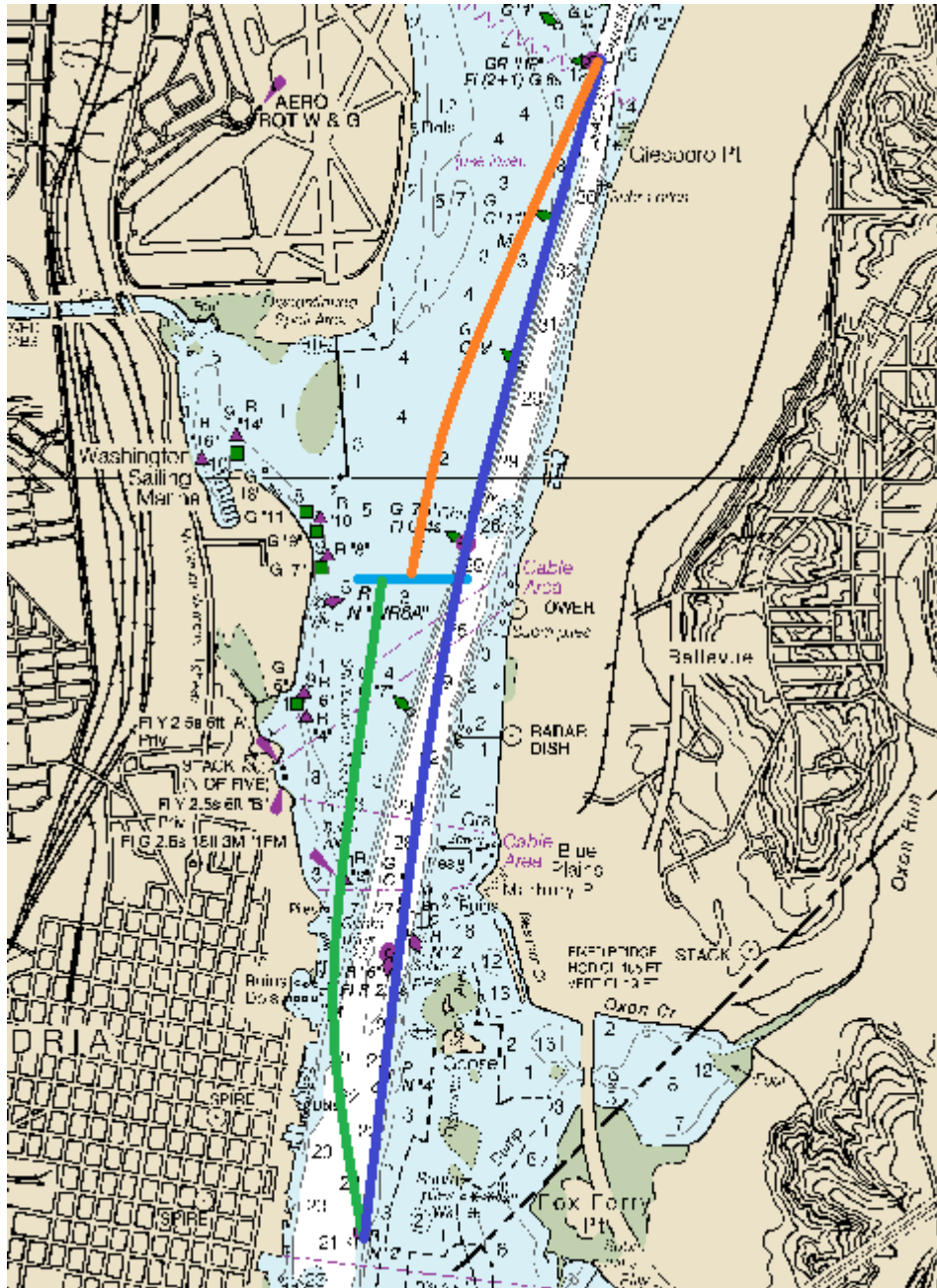
Course 2 Summary

First leg: Start to "N2" (Green on diagram below)

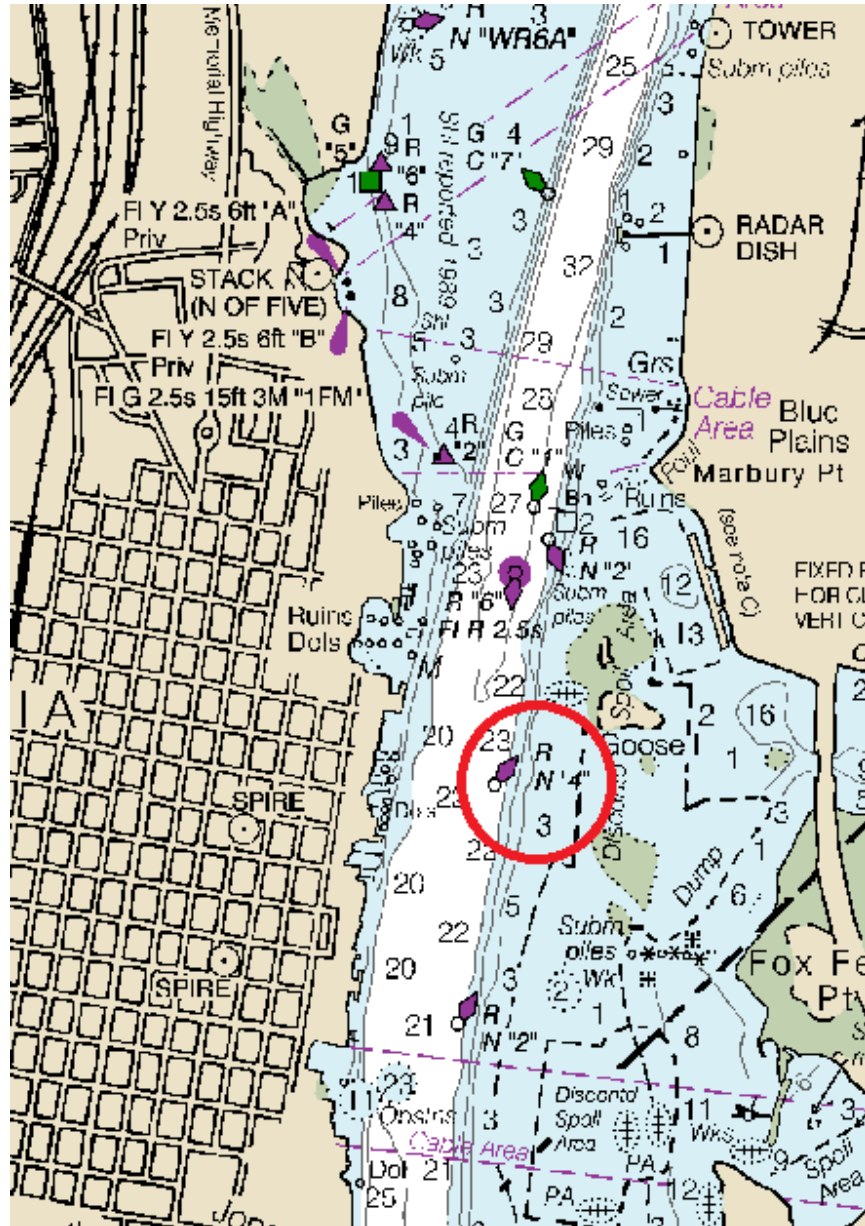
Second leg: "N2" to "N4" (Blue on diagram)

Third leg: "N4" to Finish Line (Orange on diagram)

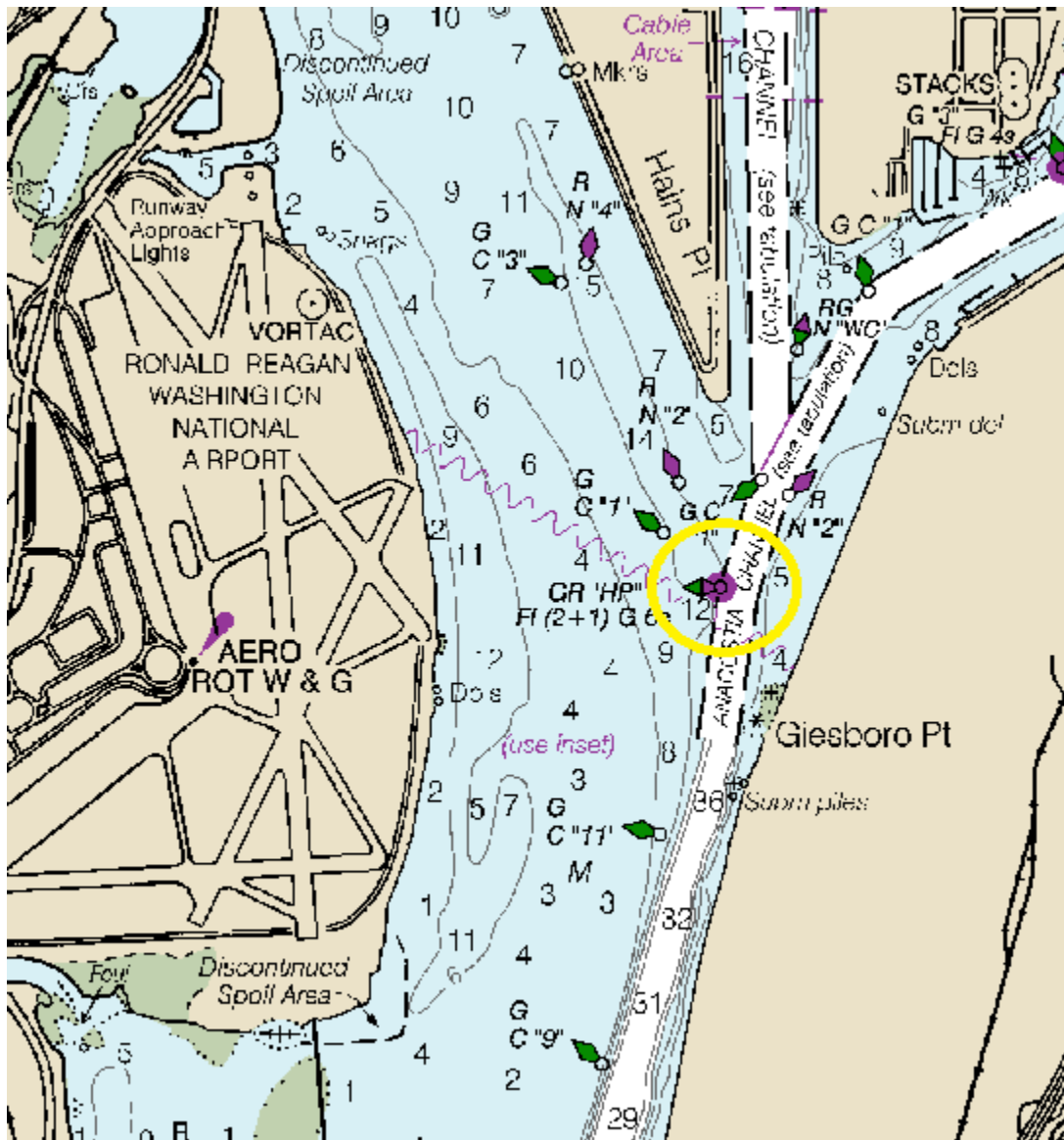
Total distance (minimum): ~9.5 nautical miles



Mark 1: "N2" (second to last red channel marker north of the Wilson Bridge). Round to Port.



Mark 2: Bifurcation Buoy at Potomac River and Anacostia Branch. Round to Port.



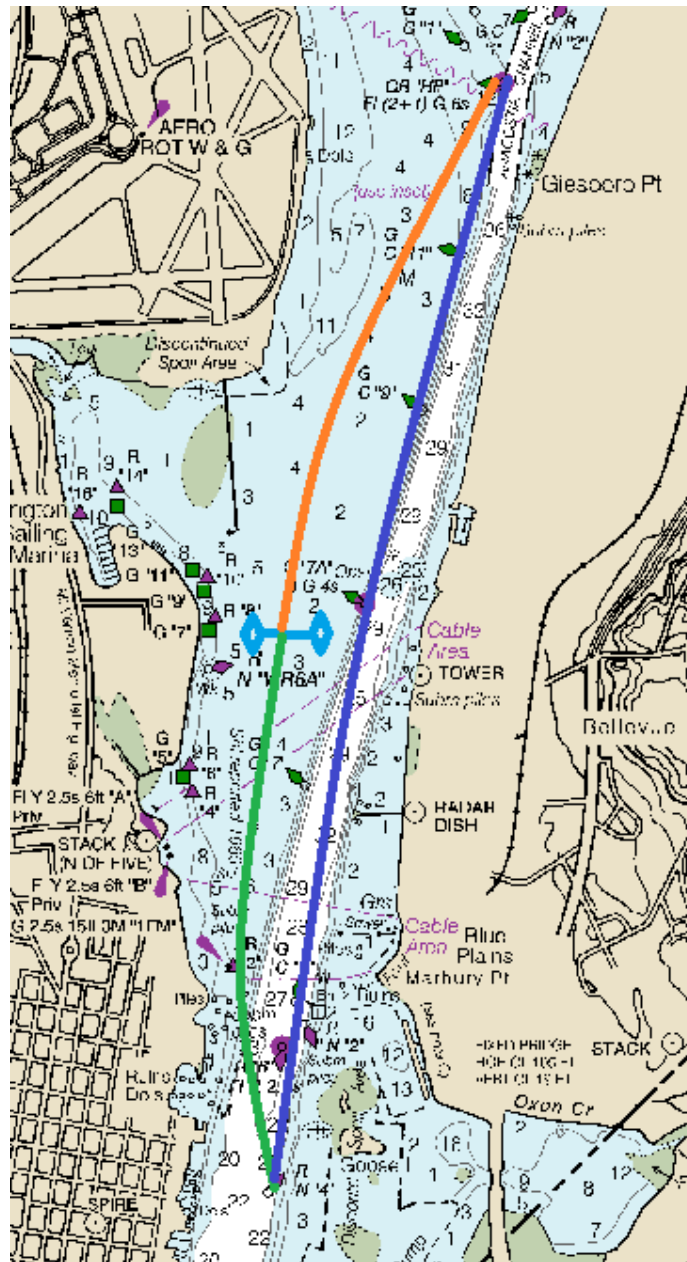
Course 3 Summary (diagram on next page)

First leg: Start to "N4" (Green on diagram below)

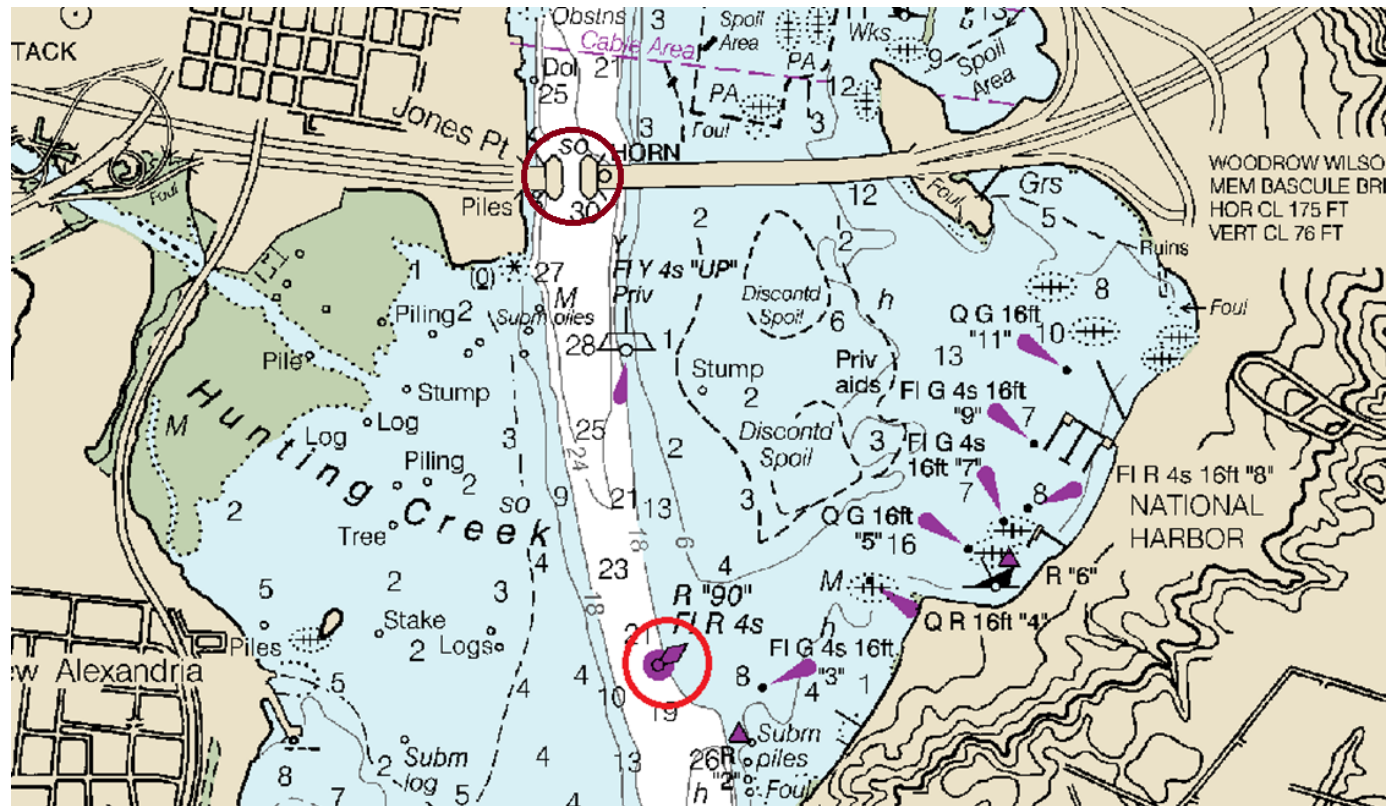
Second leg: "N4" to Bifurcation Buoy (Blue on diagram)

Third leg: Bifurcation Buoy to Finish Line (Orange on diagram)

Total distance (minimum): ~7 nautical miles



Mark 1: "R90" (second red channel marker south of Wilson Bridge). Round to Port. Return to Finish.

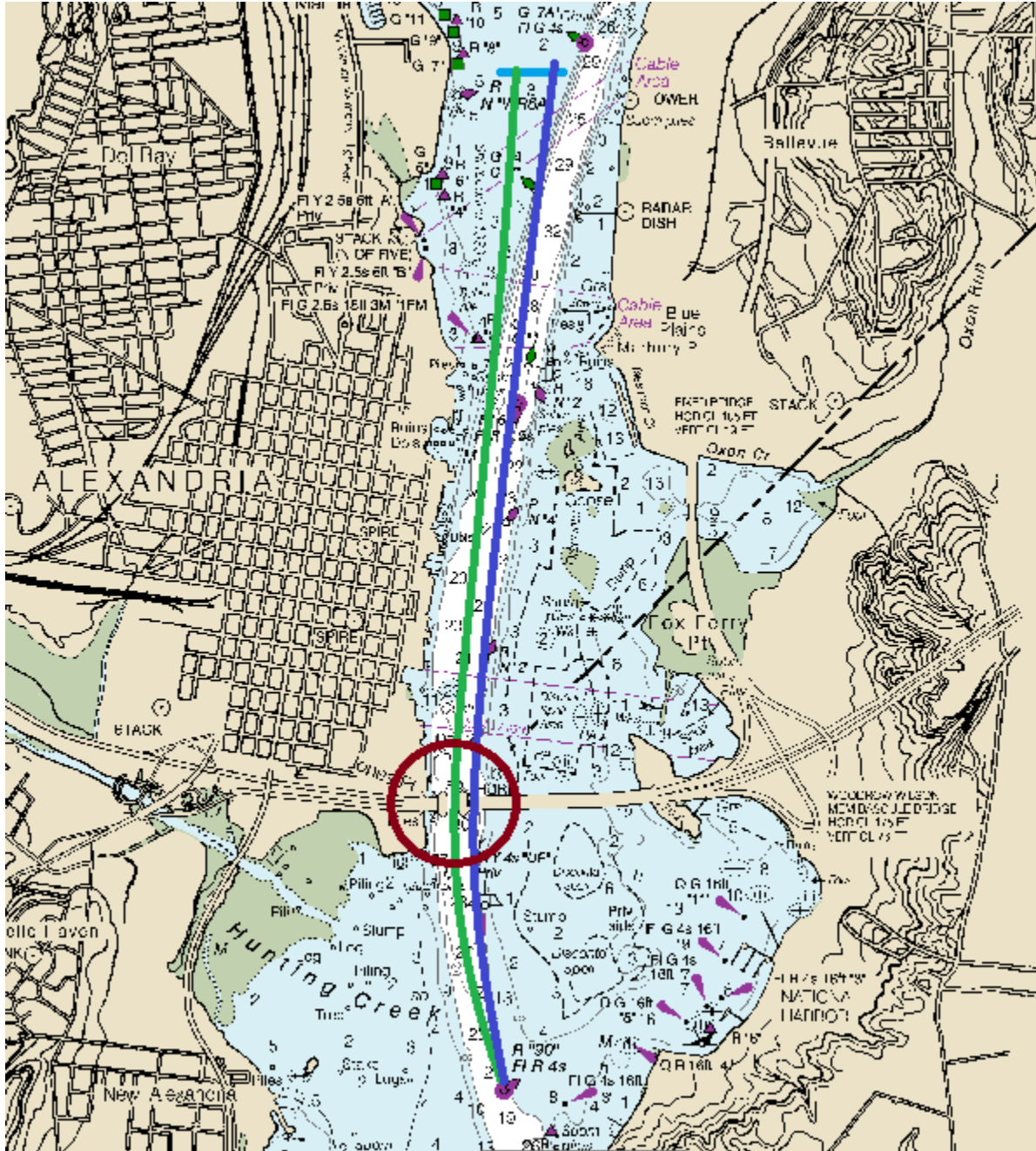


Course 4 Summary

First leg: Start to "R90" (Green on course below; pass through brown circle)

Second leg: "R90 to Finish (Blue on course below; pass through brown circle)

Total distance (minimum): ~6.5 nautical miles



COURSE 5

Start/Finish between RC boat and start/finish pin in the middle of the river (same as Course 1).

Mark 1: "N4" (second to last red channel marker north of the Wilson Bridge). Round to Port.

Mark 2: Bifurcation Buoy at Potomac River and Anacostia Branch. Round to Port.

Mark 3: "N4"

Finish

Course 5 Summary (diagram on next page)

First leg: Start to "N4" (Green on map below)

Second leg: "N4" to Bifurcation Buoy (Blue on map below)

Third leg: Bifurcation Buoy to "N4" (Orange on map below)

Fourth: "N4" to Finish

Total distance (minimum): ~8.5 nautical miles

